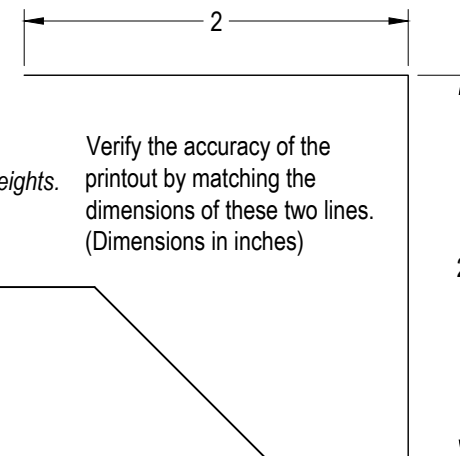


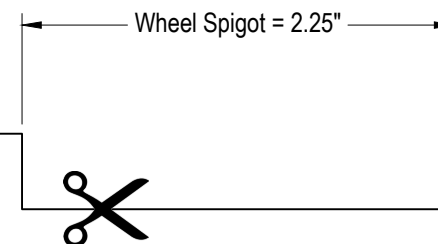
How to use this template:

1. Print "**Actual size**" (no scaling) with paper size set to Letter Landscape.
2. Glue this page onto a suitable piece of cardboard.
3. Cut along the outline below. *This includes a 0.1" clearance gap required for the brake system to fit under your wheel.*
4. Remove a wheel and lay it face down.
5. Fit the "Wheel Spigot" section into your wheel's center hole.
6. Check that the template cutout clears the wheel surfaces to ensure sufficient clearance for the new brake system. *Take careful note of balancing weights.*



APR

Powerbrake: S6L / 380x34mm
 Vehicle: Audi RS3 8V Sedan
 Platform: VAG12F



APR		APR LLC Opelika, AL 36801 Tel: (800) 680 7921
WHEEL FITMENT TEMPLATE		
VEHICLE:	Audi RS3 8V Sedan	
KIT TYPE:	S6L / 380x34mm	
PLATFORM:	VAG12F	
<small>It is critical to accurately check wheel clearance with this template before purchasing your APR kit.</small>		